



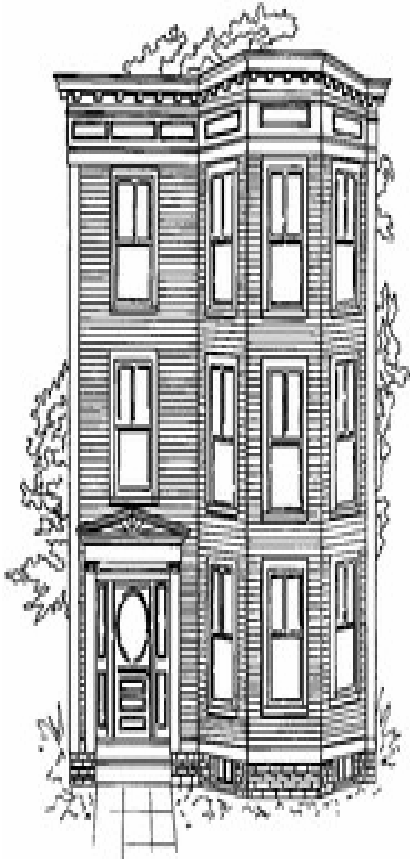
Worcester Lead Action Collaborative (WLAC)

The **Worcester Lead Action Collaborative (WLAC)** is a joint effort of public and private agencies, neighborhood organizations, and concerned citizens committed to eliminating childhood lead poisoning in Worcester by 2010. WLAC members have come together out of concern for the health of Worcester's children, put in jeopardy by our city's status as a high-risk community for childhood lead poisoning.

WLAC member organizations include:

- African Community Development Corporation
- Catholic Charities of Worcester County
- Central Massachusetts Housing Alliance
- Clark University
- Fairbridge Project International
- Family Health Center of Worcester
- Great Brook Valley Health Center
- Legal Assistance Corporation of Central Massachusetts
- Liberian Association of Worcester
- Lutheran Social Services of New England, Refugee and Immigrant Services
- Massachusetts Department of Public Health, Childhood Lead Poisoning Prevention Program (CLPPP)
- NeighborWorks® HomeOwnership Center of Worcester
- Refugee and Immigrant Assistance Center
- Regional Environmental Council of Central Massachusetts
- Southeast Asian Coalition of Worcester
- Worcester City Manager's Office, Division of Neighborhood and Housing Development
- Worcester Community Action Council
- Worcester Department of Health and Human Services, Division of Public Health
 - Childhood Lead Poisoning Prevention Program (CLPPP)
 - Laboratory
- Worcester Immigrant Coalition
- Worcester Property Owners Association
- Worcester Roots Project

Our Goal: To eliminate lead poisoning in Worcester by increasing the availability of lead-safe housing, removing lead from homes and soil, building community awareness and improving public policy.



Want to get involved?

Contact us:

Steve Fischer, Coordinator
Worcester Lead Action Collaborative
Regional Environmental Council
P.O. Box 255
Worcester, MA 01613
Phone: (508) 799-9139
Fax: (508) 799-9147
wlac@recworchester.org
www.recworchester.org/wlac



The Worcester Lead Action Collaborative (WLAC) is a program of the Regional Environmental Council of Central Massachusetts (REC).