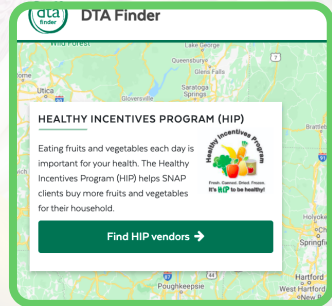


# REC MARKETS ON PAUSE IN MAY



## USE YOUR MAY HIP:



### Farmers World

154 SW Cutoff  
Worcester, MA 01604

508-873-4408

**Opens May 12th**

Everyday, 9-5:30pm

### Breezy Gardens

6 McNeil Highway, Rte 9  
Leicester, MA 01524

508-892-9201

**Opens May 24th**

Everyday, 9-5pm

### DTA Finder

DTA Finder is a site created to help you locate your nearest HIP vendors

**DTAFinder.com**

## REC MOBILE MARKET BEGINS JUNE 10TH 2024

## BEAVER BROOK & UNIVERSITY PARK MARKETS BEGIN JUNE 24TH 2024

## CHECK OUR WEBSITE SOON FOR FULL SCHEDULE

## [WWW.RECWORCESTER.ORG/FARMERS-MARKETS](http://WWW.RECWORCESTER.ORG/FARMERS-MARKETS)